

L

I



—
URBAN-COZY LIGHTING



**The future of
outdoor lighting
comes from
the inside.**





Where
bringing
the
indoors
out.

Lumca introduces the industry's first Urban-Cozy outdoor lighting category.

Lumca is creating a seismic shift in outdoor lighting design. This achievement of lighting life, which we set out to do since the very beginning, will take on a whole new meaning.

How?

Envision the performance of outdoor urban LED lights—with the beauty and coziness of indoor lighting. Imagine your next project steering away from a cold, tech-like design to creating an inviting atmosphere of comfort and contentment. Picture spaces that become sanctuaries. Roads that reunite people. Sidewalks that sustain connections, friendships and activities.

We're bringing the indoors out. And it starts with Lumca's brand new Urban-Cozy lighting family.









Outdoor lighting never felt so good.

Lumca's new LIO Urban-Cozy lighting family redefines what it means to light life outdoors. These new lights bring the coziness of indoor light fixtures to outdoor LED lights for a wide array of applications, including smart cities, urban development or renewal projects, city parks and waterfronts, businesses, venues, and so much more.

LIO's luminous LED lights feature 15 000 lumens for brilliant performance. What makes their visual comfort so pleasing are their diffusing glass lenses technology that reduce jarring glare by hiding the LEDs' point sources of light. They create a comfortable, milky-way-like candescence. LIO lights will definitely become the awe-inspiring backdrops for stellar ambiances and cityscapes.

As part of any LEED- or WELL-certified project, LIO solutions not only light with a new look but also refocus lighting on what truly matters: people's well-being.



Outdoor lighting never had this much quality.

Meet Lumca's first Urban-Cozy light, LIO. Sleek and stylish, its design pays tribute to the lights that transform our homes into oasis. With LIO, the high-quality and aesthetic narrative of interior light fixtures is now brought to public spaces—with the performance and robustness operators require.

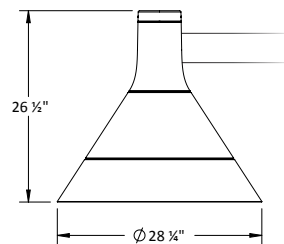
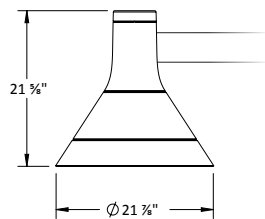
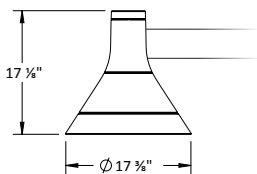
UP TO 15 000 LUMENS LIO-L (LARGE)

UP TO 124 LUMENS/WATT

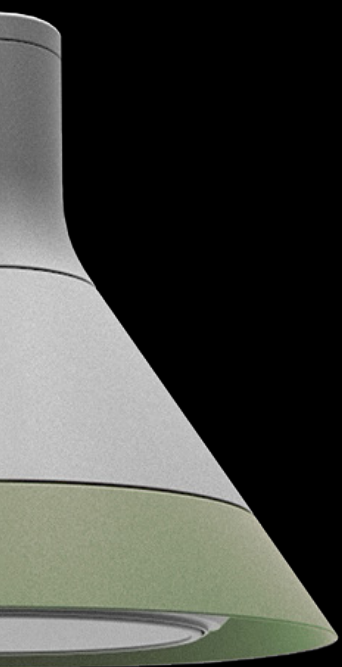
IES DISTRIBUTION TYPE 1,2,3,4,5

CCT: 3000 K and 4000 K


CRI: 70 and 80







Outdoor lighting has never been so connected.



The LIO family of Urban-Cozy lights can be mounted with Lumca's Smart Pole—the only rail system on the market that fuses a stunningly slick design with unmatched technology capabilities and endless customization for any smart city project.

Lumca's Smart Pole enables you to seamlessly integrate 5G cannisters, digital billboards, sensors, and security and charging systems—all while eliminating the visual clutter in the public realm. Thanks to Lumca's Smart Pole and its Urban-Cozy LIO lights, cities of the future can offer citizens the best of both worlds: connectivity and comfort.







Lumca's Urban-Cozy lights @Water Street Tampa™

Lumca's LIO lights, along with our Smart Poles, will be gracing the Water Street Tampa™ community. The Water Street Tampa has achieved the WELL Design & Operations ("D&O") designation under the WELL Community Standard, the first neighborhood to obtain this designation globally.

Developed by Strategic Property Partners (SPP), this new mixed-use district, located on 56-acres of land in downtown Tampa, will reconnect the city core to the waterfront and adjacent neighborhoods. The project is based on a revolutionary vision for a more balanced, urban experience.

Water Street Tampa has pushed the innovation envelope to a whole new level by engaging the best minds and suppliers in land planning, landscape architecture and building architecture from across North America. Lumca is immensely proud to play a pivotal role in providing outdoor lighting for Water Street Tampa in collaboration with our agent, Sesco Lighting. We are eager to light Water Street Tampa's urban life in a cozy way.

sleek design

The idea behind Lio

The LIO line of outdoor lighting products draws its inspiration from the clean, simple lines and comforting, enveloping light renderings found in interior fixtures, from which it takes its name Lumca Inside Outside. The luminaire design is totally human-centered in terms of its appearance, lighting performance, installation system, maintenance and also its end-of-life cycle.

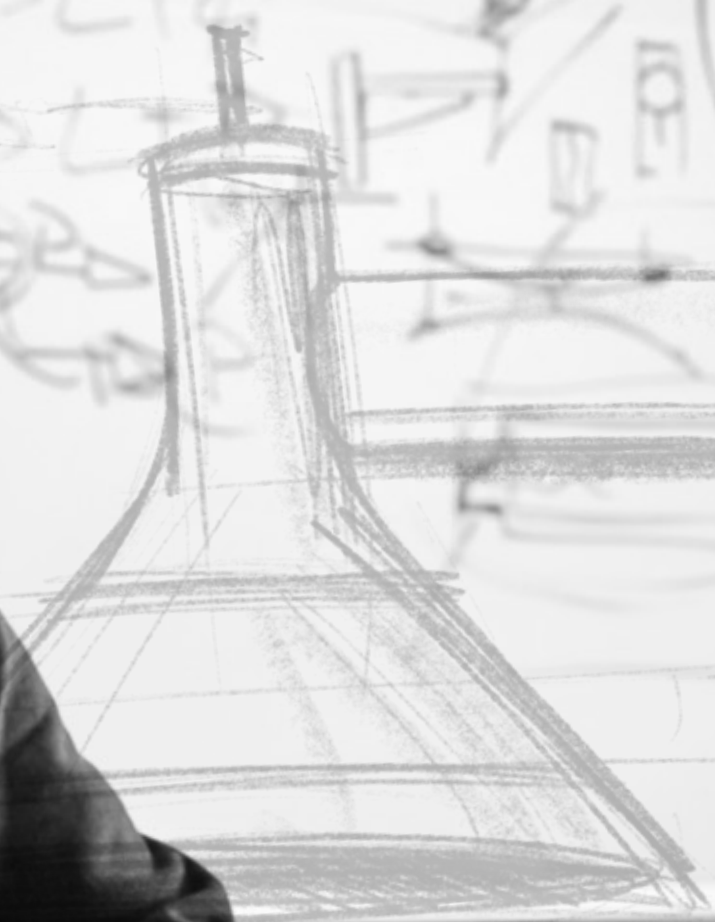
The LIO line of products is Lumca's work synthesis of what's next in outdoor lighting future. The first luminaires of the urban-cozy lighting category marks the translation of how city centers should be lit in order to bring a sense of comfort and security to the citizens who live, work, study and visit the area every day making urban neighborhood pleasant to be in.

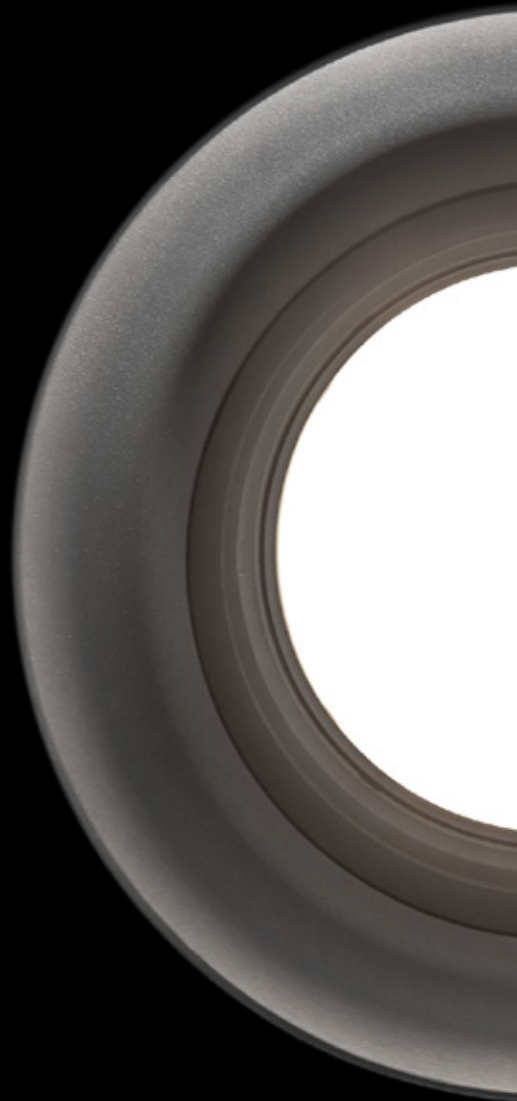
Luc Fortin
Senior Product Designer
at Lumca





- IPGC
- DL
- ...
- CJH





lumca.com